



**Winnow®**  
24" x 70" linen tower  
**K-33582-ASB**

**Features**

- Two full-extension 12-3/4" (325 mm) drawers with soft-close side-mount slides
- 18" (457 mm) cabinet interior with two shelves provides ample storage space
- Finish-matched cabinet interior
- Customize your storage with optional accessories such as floor liners, drawer organizers, and perfectly sized containers (sold separately)
- Coordinates with K-33584 upgraded hardware finishes (sold separately)

**Material**

- Solid wood and moisture-resistant MDF
- Painted exterior

**Installation**

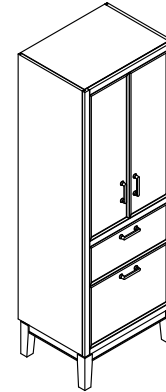
- Easy installation – no special tools required

**Required Products/Accessories**

K-29747 Protective floor liner for 24" cabinet  
K-33584 4" cabinet pull

**Included Components**

Additional Components:  
Wall mounting hardware



**Codes/Standards**

EPA TSCA Title VI/CARB P2

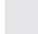

**KOHLER® One-Year Limited Warranty**

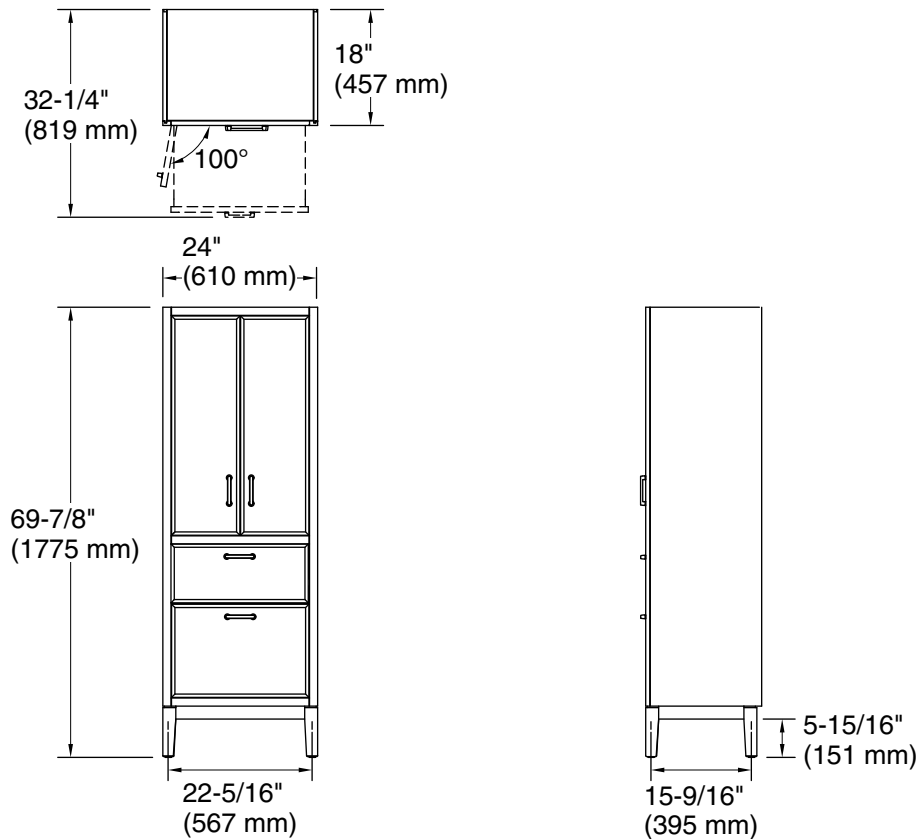
See website for detailed warranty information.

**Available Colors/Finishes**

*Color tiles intended for reference only.*

**Color Code Description**

	0	White
	1WX	Grey Slate



### Technical Information

All product dimensions are nominal.

### Notes

Install this product according to the installation instructions.